



"LOST LEGACY"



URBAN DESIGN AND PUBLIC PLACES

The natural resilience to atmospheric agents of refractory mixtures, stainless steel and other metals, allows for the application of these materials in urban design and outdoor.

Coat of arms, emblems, sculptures, fountains and per-project designs.



TETIS®



"KNOWLEDGE TOWN"



URBAN DESIGN AND PUBLIC PLACES

The natural resilience to atmospheric agents of refractory mixtures, stainless steel and other metals, allows for the application of these materials in urban design and outdoor.

Coat of arms, emblems, sculptures, fountains and per-project designs.



TETNIS®



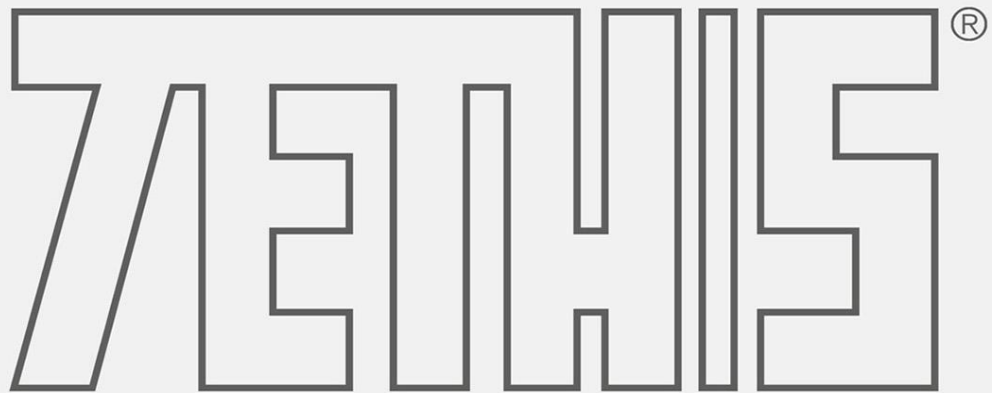
URBAN DESIGN AND PUBLIC PLACES

The natural resilience to atmospheric agents of refractory mixtures, stainless steel and other metals, allows for the application of these materials in urban design and outdoor.

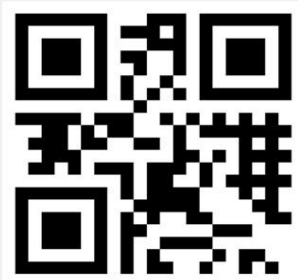
Coat of arms, emblems, sculptures, fountains and per-project designs.



TETHIS®

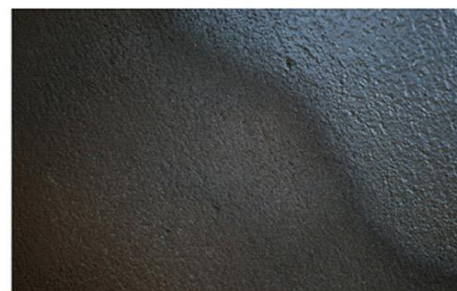
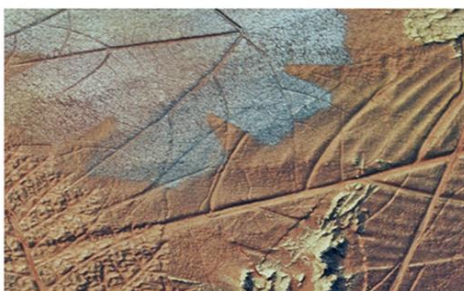


SCULPTURES AND ARTISTIC INSTALLATIONS FOR PUBLIC
PLACES AND INTERIOR DESIGN by BORIS PROIETTI

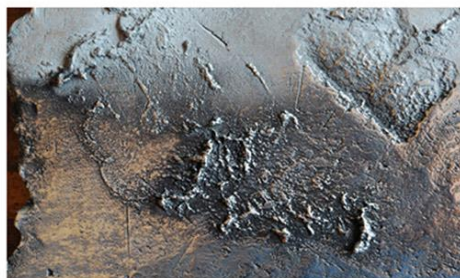
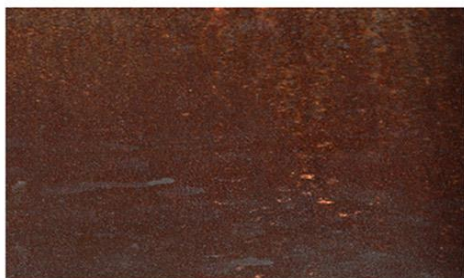


www.tethis.it

GRES E REFRATTARI

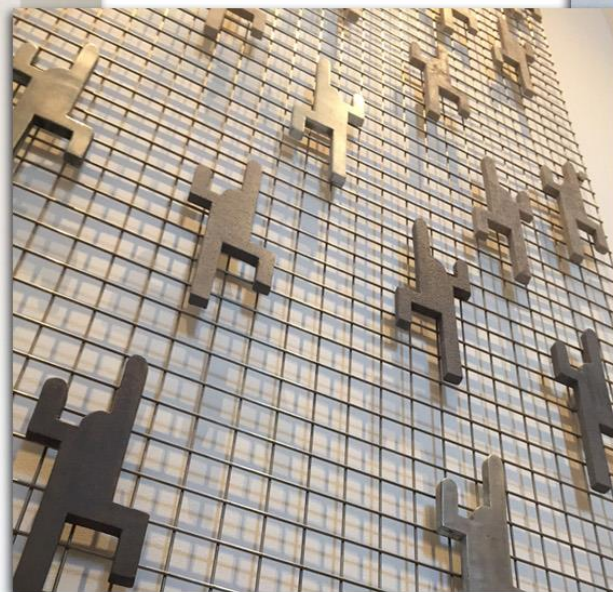


METALLI



Fire clays and metals combined with the versatility typical of an artisan workshop, allows the creation of not only the proposed artistic examples, but also personalized singletons such as decorative panels, sculptures, architectural details, particular covering and much more.





SCULPTURES AND DESIGN FURNITURE



arredo con tronchi di platano
scortecciati e sbiancati



Rocce artificiali per spa

TETUS[®]

SCULPTURES AND DESIGN FURNITURE

Realizzazione di elementi d'arredo
particolari, sculture e scenografie su misura



5th avenue



SURFACES - DESIGN FOR MATERIALS TEXTURES

Some examples

The refractory mixtures (fire clays) used, which cook at 1100 degrees C, are resilient, can sustain high temperatures and are perfect to be used outside, as well. The clays are of different composition and provenance; each and every one has



7ETWIS®



"FLORENCE" example



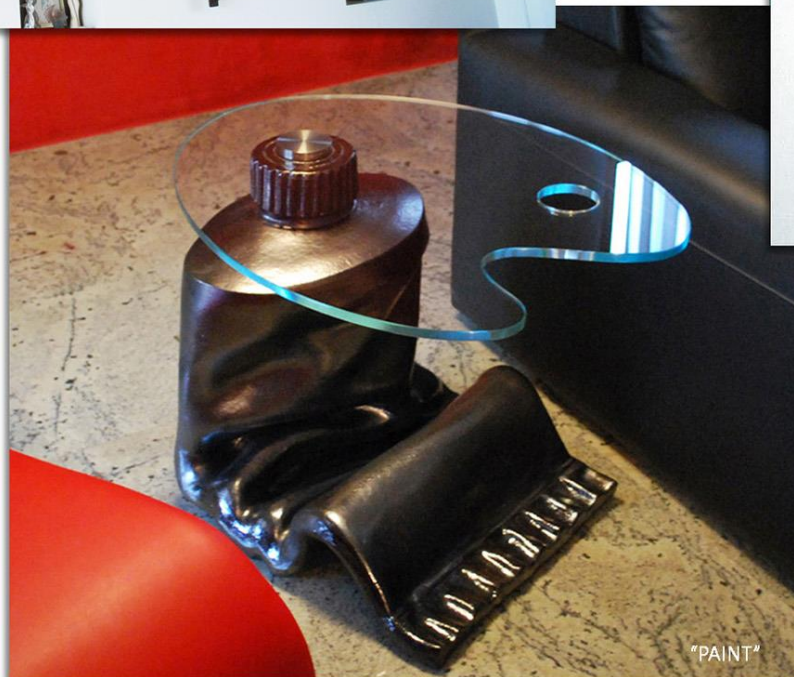
HANDMADE - WORK IN PROGRESS

URBAN SKYLINE

The different use of refractory clay give natural colors and depth to the represented skylines which are completely hand made. It is possible to realize and develop any skyline or subject that the client requires after a preliminary sketch. Varying dimensions as well as backlit possibilities.



"VENICE" example outdoor



SCULPTURES AND DESIGN FURNITURE

Sculptures represent Boris' most intense expression of creativity. Materials and subjects are the result of "creating" with maximum emotional and thought freedom.

7ETHIS®



"KNOWLEDGE STREET"

SCULPTURES AND DESIGN FURNITURE

Sculptures represent Boris' most intense expression of creativity. Materials and subjects are the result of "creating" with maximum emotional and thought freedom.



"REVIVISCENCE"



"EVANESCENCE"

ZETWIS®



"METALLIC FOSSIL RECORD"

SCULPTURES AND DESIGN FURNITURE

Sculptures represent Boris' most intense expression of creativity. Materials and subjects are the result of "creating" with maximum emotional and thought freedom.

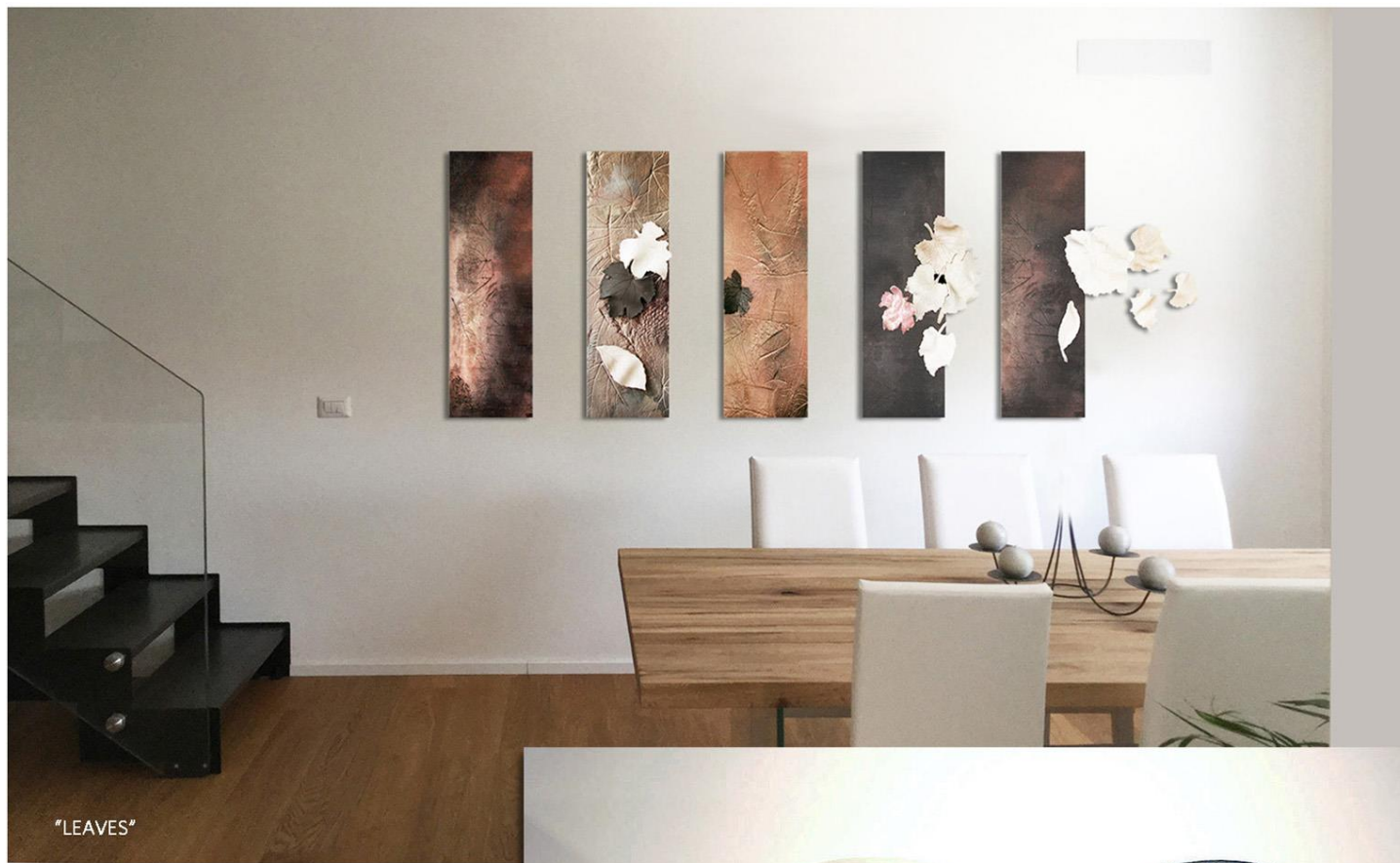


"FAHRENHEIT 451"



"LOST"

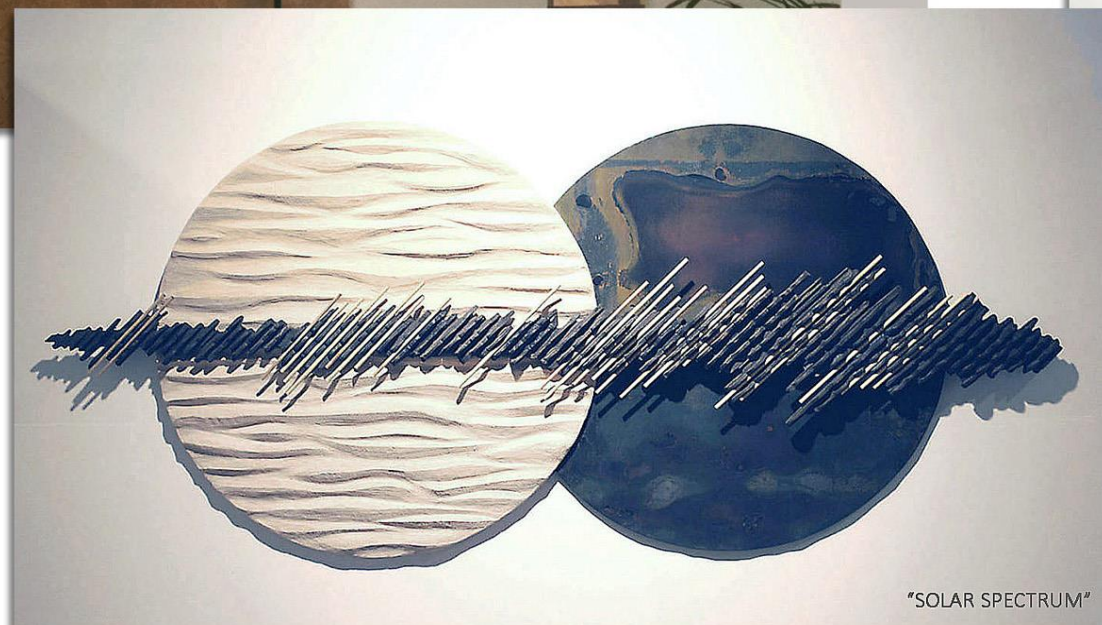
TETIS®



"LEAVES"

SCULPTURES AND DESIGN FURNITURE

Sculptures represent Boris' most intense expression of creativity. Materials and subjects are the result of "creating" with maximum emotional and thought freedom.



"SOLAR SPECTRUM"



"WAY TO TECHNOLOGY"

7ETWIS®